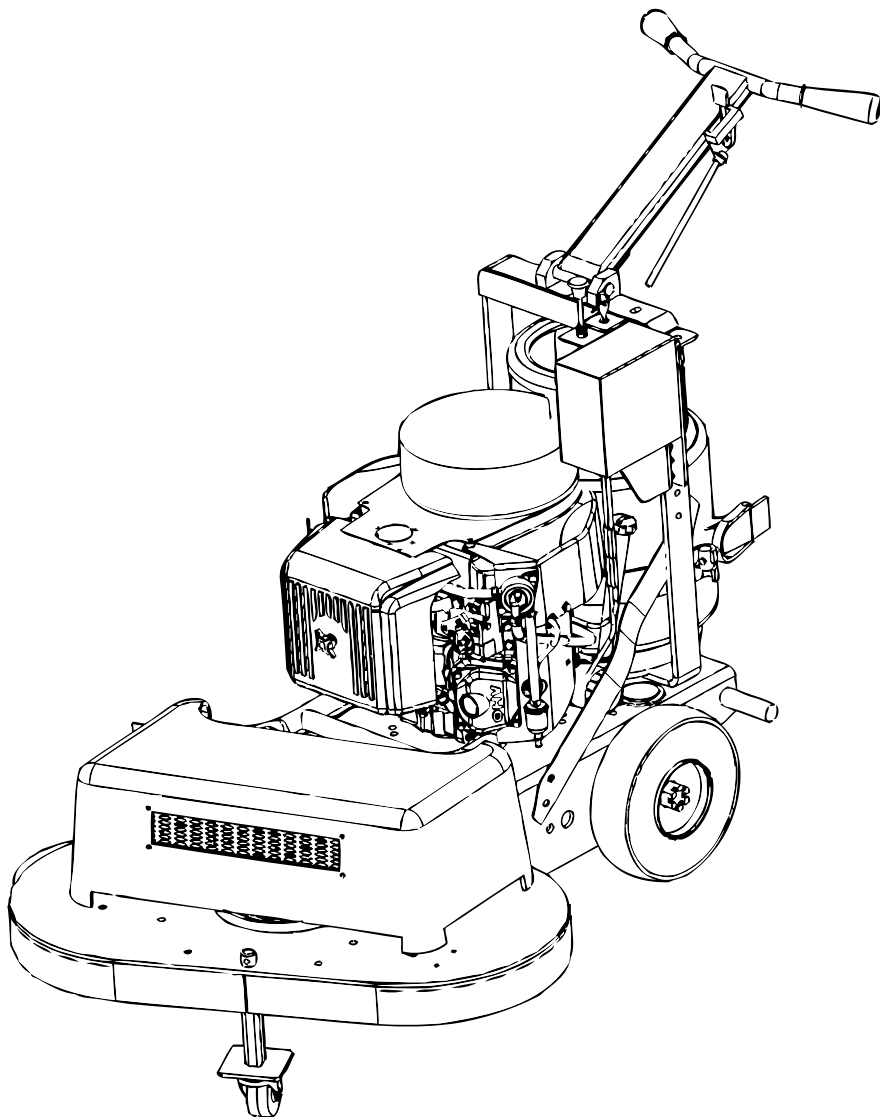


Tracker 3000 Parts Manual

Model #:

680022,
680267,
680570



©2008

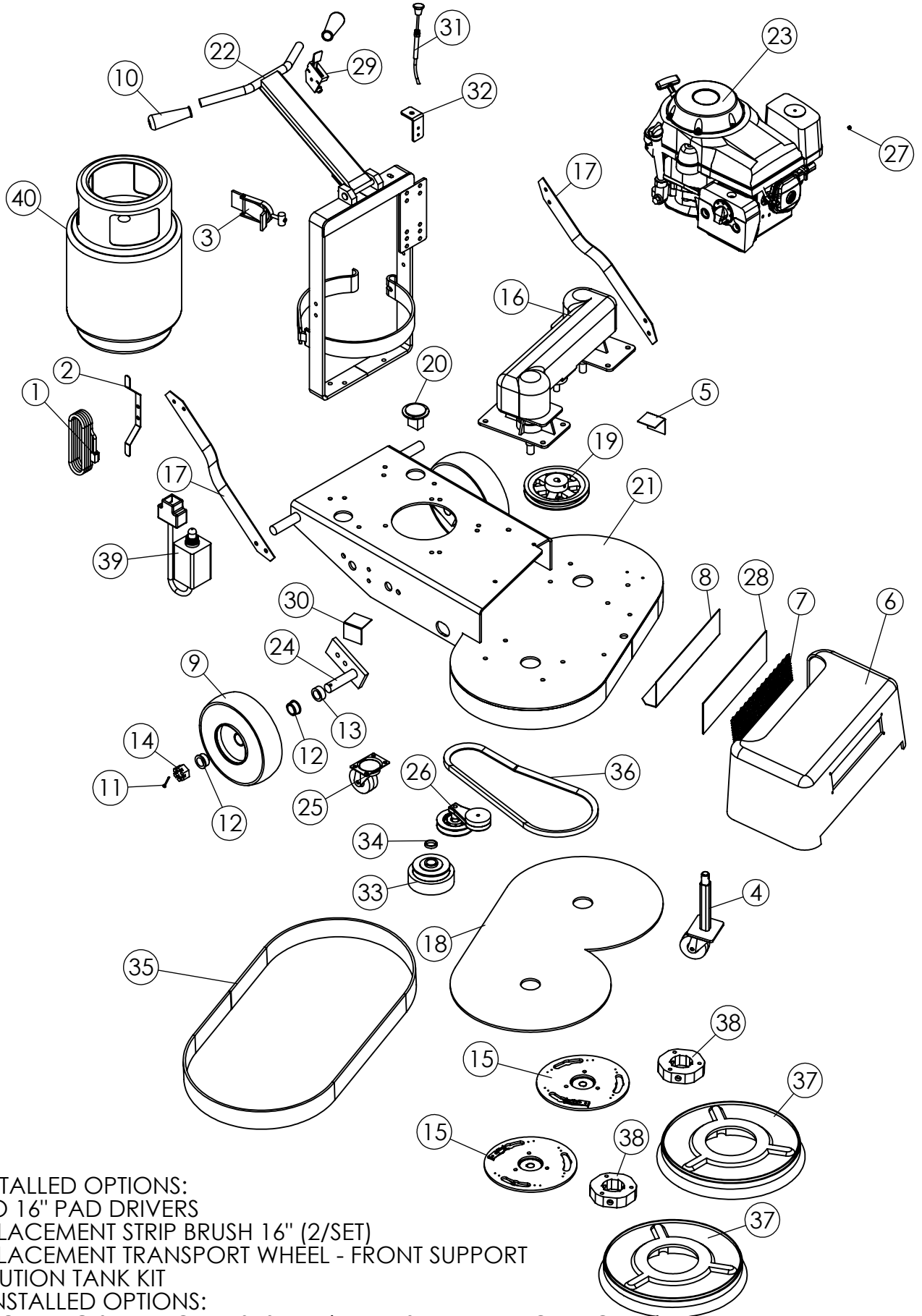
P.O. Box 350, 100 Eagle Parkway, Adairsville, GA 30103

800.633.0519 or 770.773.3875 Fax 770.773.9903

www.EagleFloorSolutions.com, email - customerservice@eaglefloorsolutions.com

680022

TRACKER 3000 STRIPPER HONDA 13 HP (389cc)



OWNER INSTALLED OPTIONS:

680023 TWO 16" PAD DRIVERS

680029 REPLACEMENT STRIP BRUSH 16" (2/SET)

680039 REPLACEMENT TRANSPORT WHEEL - FRONT SUPPORT

681532 SOLUTION TANK KIT

FACTORY INSTALLED OPTIONS:

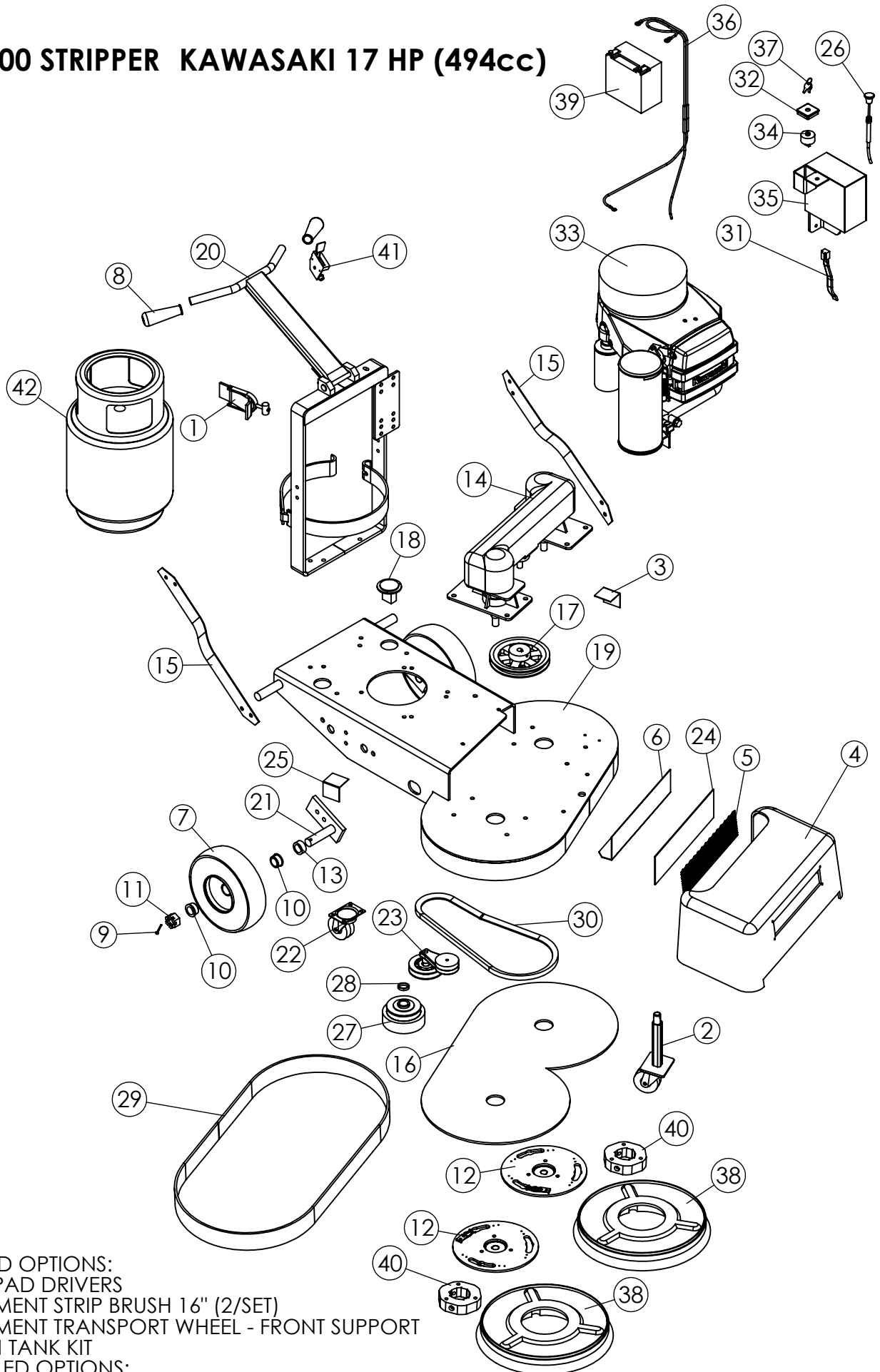
680275 AUTOMATIC SHUT DOWN SYSTEM (KAWASAKI AND ROBIN ONLY)

680022**TRACKER 3000 STRIPPER HONDA 13 HP (389cc)**

ITEM NO.	PART NUMBER	DESCRIPTION	QTY.
1	1555	EXTENSION CORD	1
2	680677	EXTENSION CORD WRAP	1
3	1003	TOGGLE	1
4	680045	TRANSPORT WHEEL BRACKET COMPLETE	1
5	680182	NEW STYLE HOOD ASSY BRACKET LH	1
6	680263	ALLUMINUM COVER TRACKER 3000	1
7	680243	EXPANDED METAL PLATE 3 1/2 X 15	1
8	680242	HEAT SHEILD SUPPORT PLATE SS3000	1
9	5240	PNEUMATIC TIRE 10" (FOAM FILLED)	2
10	1010	HANDLE GRIP	2
11	850180	COTTER PIN	2
12	680109	DELTRIN BEARING 1" SS3000/2500DC	4
13	680820	5/8 WHEEL SPACER DELTRIN	2
14	850120	NUT, HEX 1-14, SLOTTED	2
15	680494	MOUNTING PLATE TWIN ASSEMBLY	2
16	680416	GEAR BOX 1PC. TRACKER	1
17	680121	HANDLE GUSSET	2
18	680042	WEIGHT 30 TWIN HEAD	1
19	680244	PULLEY 7.0 X 5/8"	1
20	1240	HOUR METER	1
21	680172	TRACKER FRAME	1
22	1002	HANDLE	1
23	H390	HONDA 390 13 HP WITHOUT STARTER	1
24	680044	WHEEL AXLE TRACKER 3000	2
25	1210	3 X 1-1.25 SWIVEL PLATE CASTER WITH SPARTAN WHEEL	1
26	680372	TENSIONER 24 & 27 BUFFER	1
27	681506	680967 WITH #27 ORIFICE H	1
28	680241	HEAT SHEILD FOIL MATERIAL	1
29	1015	THROTTLE CABLE	1
30	680181	NEW STYLE HOOD ASSY BRACKET RH	1
31	680255	CHOKE CABLE PUSH / PULL (KAWASAKI / ROBIN)	1
32	680345	CHOKE BRACKET - HONDA TOP	1
33	9037	CENTRIFUGAL CLUTCH	1
34	9035	CLUTCH SPACER	1
35	680254	SPLASH GUARD TRACKER - PLASTIC	1
36	3345	BELT BX-53	1
37	680029	BRUSH STRIP TRACKER 3000 16"	2
38	680026	FLEX CENTER	2
39	1550	STARTER 110 VOLT	1
40	680053	LP TANK (ALUM)	1

680267

TRACKER 3000 STRIPPER KAWASAKI 17 HP (494cc)



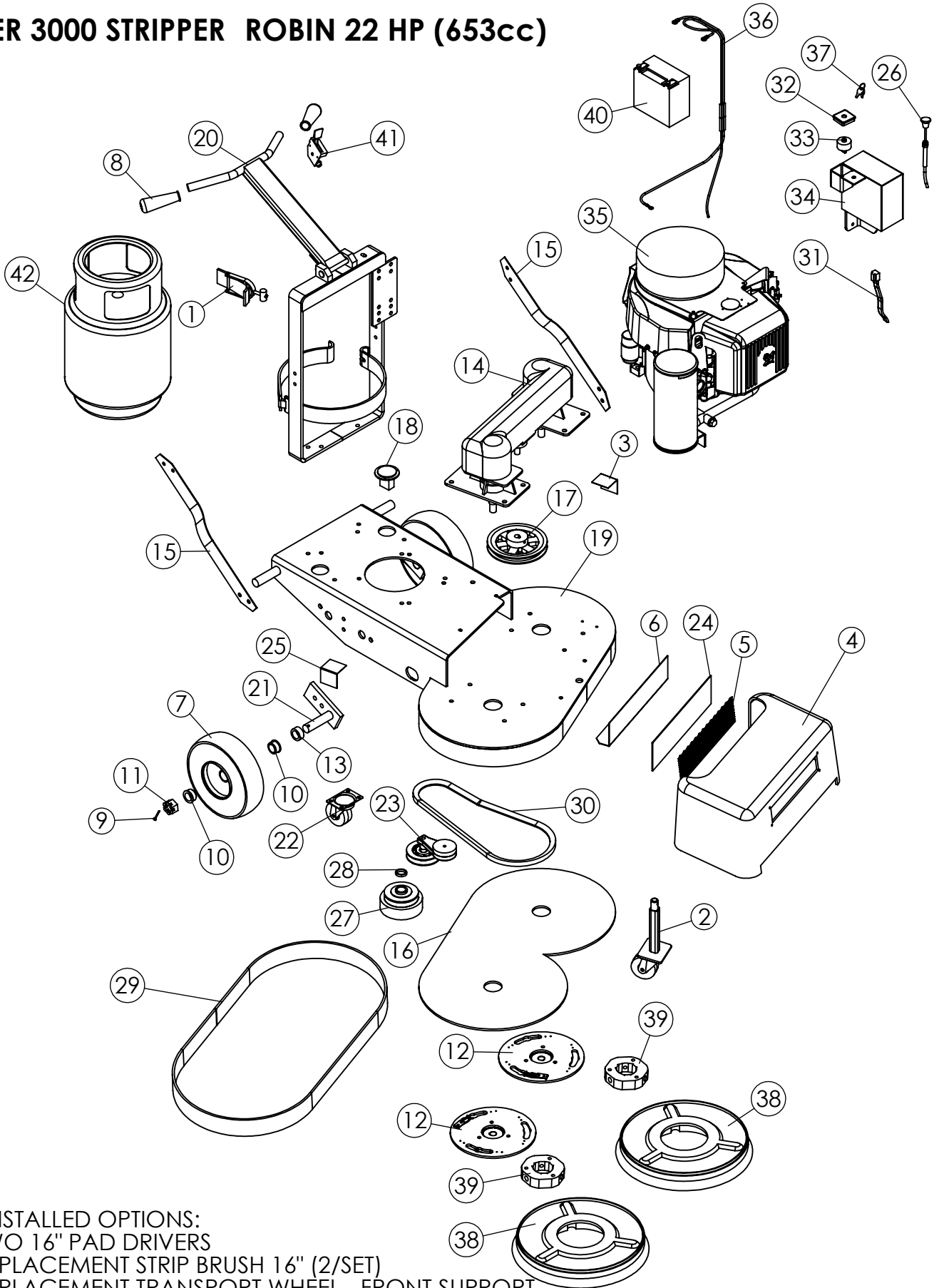
OWNER INSTALLED OPTIONS:
680023 TWO 16" PAD DRIVERS
680029 REPLACEMENT STRIP BRUSH 16" (2/SET)
680039 REPLACEMENT TRANSPORT WHEEL - FRONT SUPPORT
681532 SOLUTION TANK KIT
FACTORY INSTALLED OPTIONS:
680275 AUTOMATIC SHUT DOWN SYSTEM (KAWASAKI AND ROBIN ONLY)

680267**TRACKER 3000 STRIPPER KAWASAKI 17 HP (494cc)**

ITEM NO.	PART NUMBER	DESCRIPTION	QTY.
1	1003	TOGGLE	1
2	680045	TRANSPORT WHEEL BRACKET COMPLETE	1
3	680182	NEW STYLE HOOD ASSY BRACKET LH	1
4	680263	ALLUMINUM COVER TRACKER 3000	1
5	680243	EXPANDED METAL PLATE 3 1/2 X 15	1
6	680242	HEAT SHEILD SUPPORT PLATE SS3000	1
7	5240	PNEUMATIC TIRE 10" (FOAM FILLED)	2
8	1010	HANDLE GRIP	2
9	850180	COTTER PIN	2
10	680109	DELTRIN BEARING 1" SS3000/2500DC	4
11	850120	NUT, HEX 1-14, SLOTTED	2
12	680494	MOUNTING PLATE TWIN ASSEMBLY	2
13	680820	5/8 WHEEL SPACER DELTRIN	2
14	680416	GEAR BOX 1PC. TRACKER	1
15	680121	HANDLE GUSSET	2
16	680042	WEIGHT 30 TWIN HEAD	1
17	680244	PULLEY 7.0 X 5/8"	1
18	1240	HOUR METER	1
19	680172	TRACKER FRAME	1
20	1002	HANDLE	1
21	680044	WHEEL AXLE TRACKER 3000	2
22	1210	3 X 1-1.25 SWIVEL PLATE CASTER WITH SPARTAN WHEEL	1
23	680372	TENSIONER 24 & 27 BUFFER	1
24	680241	HEAT SHEILD FOIL MATERIAL	1
25	680181	NEW STYLE HOOD ASSY BRACKET RH	1
26	680255	CHOKE CABLE PUSH / PULL (KAWASAKI / ROBIN)	1
27	9037	CENTRIFUGAL CLUTCH	1
28	9035	CLUTCH SPACER	1
29	680254	SPLASH GUARD TRACKER - PLASTIC	1
30	3345	BELT BX-53	1
31	680223	WIRE HARNESS KAWASAKI	1
32	680209	KEY SWITCH HOUSING	1
33	681508	KAWASAKI ENGINE CONVERTED 17 HP VERTICAL MUFFLER	1
34	N3080385	KEY SWITCH	1
35	680198	BATTERY BOX WITH KEY SWITCH / CHOKE	1
36	680296	BATTERY CONNECTOR COMPLETE - KAWASAKI	1
37	680082	REPLACEMENT KEY	1
38	680029	BRUSH STRIP TRACKER 3000 16"	2
39	4002	BATTERY SM 12V	1
40	680026	FLEX CENTER	2
41	680599	THROTTLE CABLE WITH STOPS	1
42	680053	LP TANK (ALUM)	1

680570

TRACKER 3000 STRIPPER ROBIN 22 HP (653cc)



OWNER INSTALLED OPTIONS:

680023 TWO 16" PAD DRIVERS

680029 REPLACEMENT STRIP BRUSH 16" (2/SET)

680039 REPLACEMENT TRANSPORT WHEEL - FRONT SUPPORT

681532 SOLUTION TANK KIT

FACTORY INSTALLED OPTIONS:

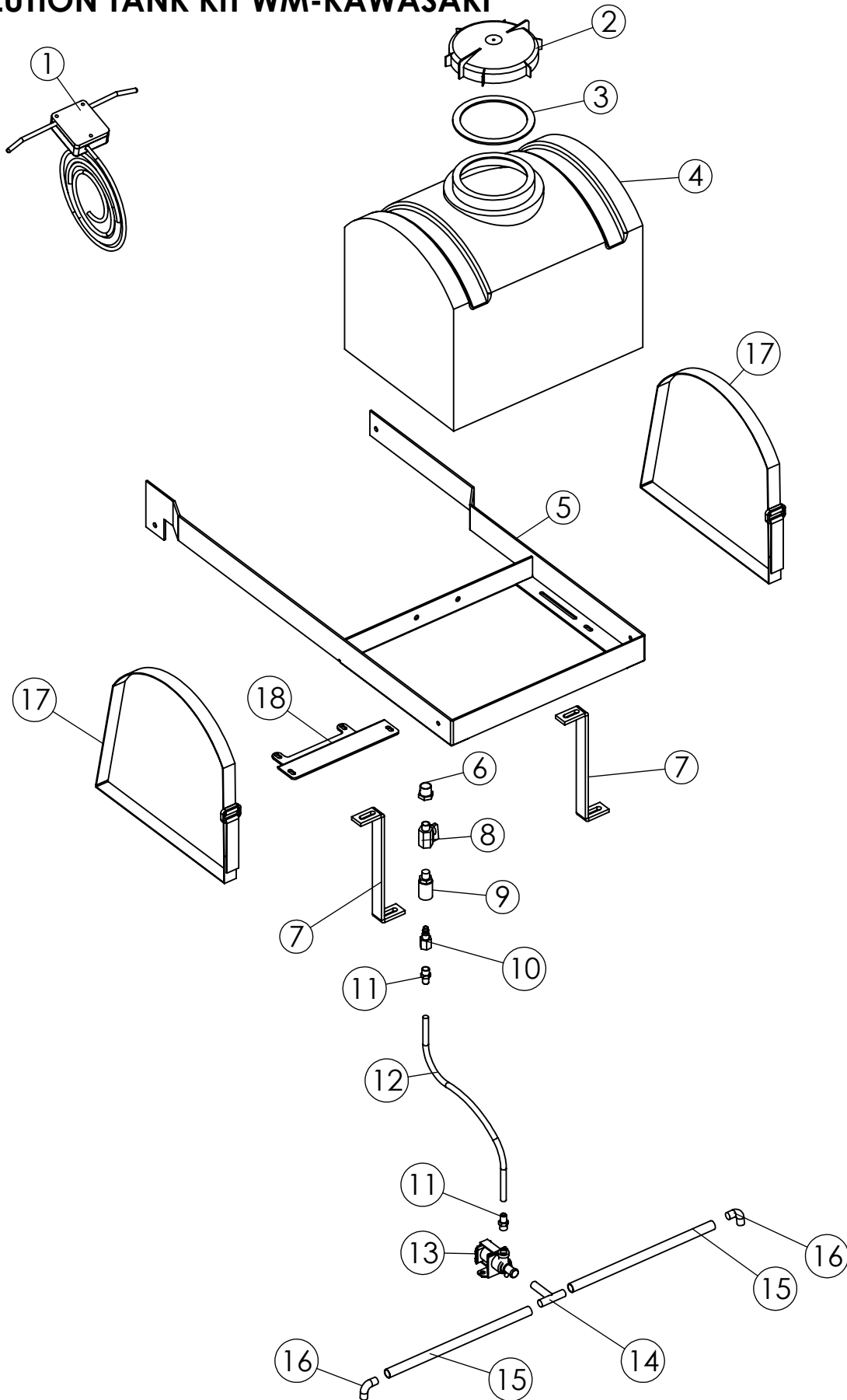
680275 AUTOMATIC SHUT DOWN SYSTEM (KAWASAKI AND ROBIN ONLY)

680570**TRACKER 3000 STRIPPER ROBIN 22 HP (653cc)**

ITEM NO.	PART NUMBER	DESCRIPTION	QTY.
1	1003	TOGGLE	1
2	680045	TRANSPORT WHEEL BRACKET COMPLETE	1
3	680182	NEW STYLE HOOD ASSY BRACKET LH	1
4	680263	ALLUMINUM COVER TRACKER 3000	1
5	680243	EXPANDED METAL PLATE 3 1/2 X 15	1
6	680242	HEAT SHEILD SUPPORT PLATE SS3000	1
7	5240	PNEUMATIC TIRE 10" (FOAM FILLED)	2
8	1010	HANDLE GRIP	2
9	850180	COTTER PIN	2
10	680109	DELTRIN BEARING 1" SS3000/2500DC	4
11	850120	NUT, HEX 1-14, SLOTTED	2
12	680494	MOUNTING PLATE TWIN ASSEMBLY	2
13	680820	5/8 WHEEL SPACER DELTRIN	2
14	680416	GEAR BOX 1PC. TRACKER	1
15	680121	HANDLE GUSSET	2
16	680042	WEIGHT 30 TWIN HEAD	1
17	680244	PULLEY 7.0 X 5/8"	1
18	1240	HOUR METER	1
19	680172	TRACKER FRAME	1
20	1002	HANDLE	1
21	680044	WHEEL AXLE TRACKER 3000	2
22	1210	3 X 1-1.25 SWIVEL PLATE CASTER WITH SPARTAN WHEEL	1
23	680372	TENSIONER 24 & 27 BUFFER	1
24	680241	HEAT SHEILD FOIL MATERIAL	1
25	680181	NEW STYLE HOOD ASSY BRACKET RH	1
26	680255	CHOKE CABLE PUSH / PULL (KAWASAKI / ROBIN)	1
27	9037	CENTRIFUGAL CLUTCH	1
28	9035	CLUTCH SPACER	1
29	680254	SPLASH GUARD TRACKER - PLASTIC	1
30	3345	BELT BX-53	1
31	680223	WIRE HARNESS KAWASAKI	1
32	680209	KEY SWITCH HOUSING	1
33	N3080385	KEY SWITCH	1
34	680198	BATTERY BOX WITH KEY SWITCH / CHOKE	1
35	681507	ROBIN ENGINE CONVERTED 17 HP VERTICAL MUFFLER	1
36	680556	BATTERY CONNECTOR COMPLETE - ROBIN	1
37	680082	REPLACEMENT KEY	1
38	680029	BRUSH STRIP TRACKER 3000 16"	2
39	680026	FLEX CENTER	2
40	4002	BATTERY SM 12V	1
41	680599	THROTTLE CABLE WITH STOPS	1
42	680053	LP TANK (ALUM)	1

681532

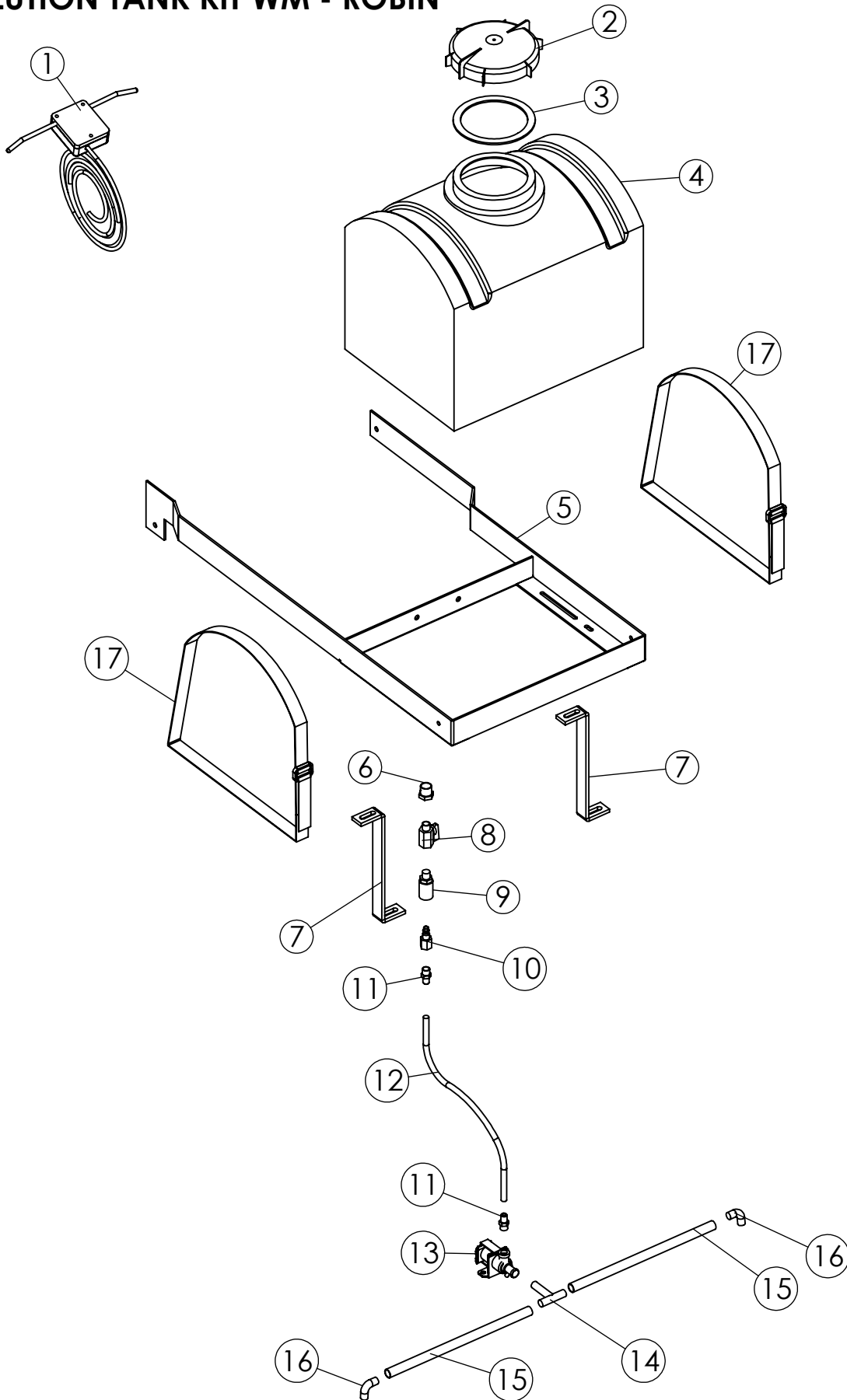
SOLUTION TANK KIT WM-KAWASAKI



681532**SOLUTION TANK KIT WM-KAWASAKI**

ITEM NO.	PART NUMBER	DESCRIPTION	QTY.
1	9038	CLUTCH SWITCH ASSY COMPLETE	1
2	680965	SOLUTION LID	1
3	681015	SEAL, SOLUTION TANK LID	1
4	680458	8 GALLON SOLUTION TANK WITH LID	1
5	680687	TANK BRACKET	1
6	680685	1/2-1/4 REDUCER	1
7	681265	TRACKER TANK SUPPORT BRACKET	2
8	680748	1/4 X 1/4 MANUAL SHUT OFF VALVE	1
9	680689	QUICK COUPLER	1
10	680684	NON VALVED NIPPLE	1
11	680939	5/16 - 1/4 CONNECTOR	2
12	680688	32" STAINLESS STEEL HOSE ASSY	1
13	700164	SOLUTION SOLENIOD	1
14	681258	TEE 1/2 INCH	1
15	700438	HOSE, 1/2 ID X 1/8 WALL CVT (DO NOT SELL)	2
16	681153	ELBOW 90 DEGREE 1/2 INCH BARB	2
17	680699	SOLUTION, TANK STRAP	2
18	681185	Z BRACKET	1

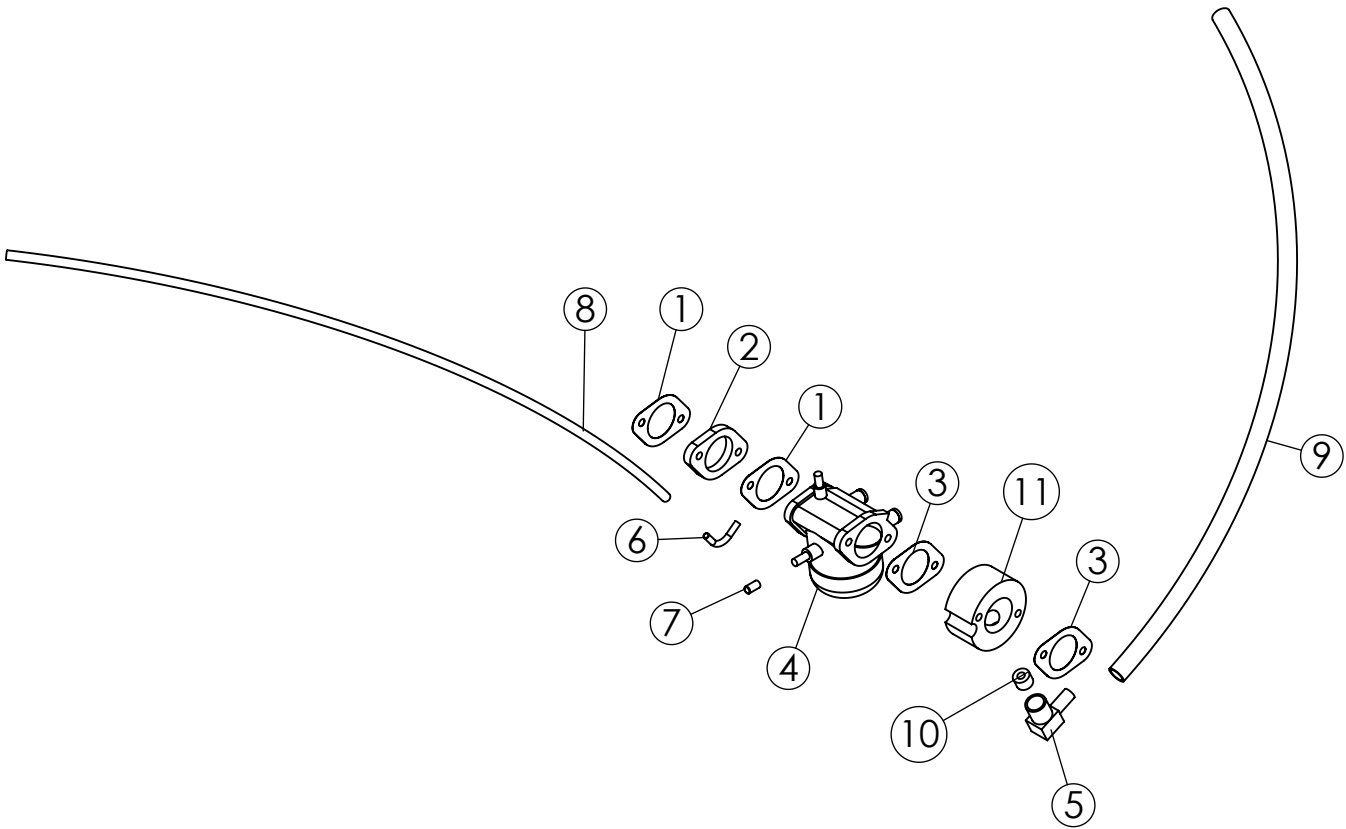
681561
SOLUTION TANK KIT WM - ROBIN



681561**SOLUTION TANK KIT WM - ROBIN**

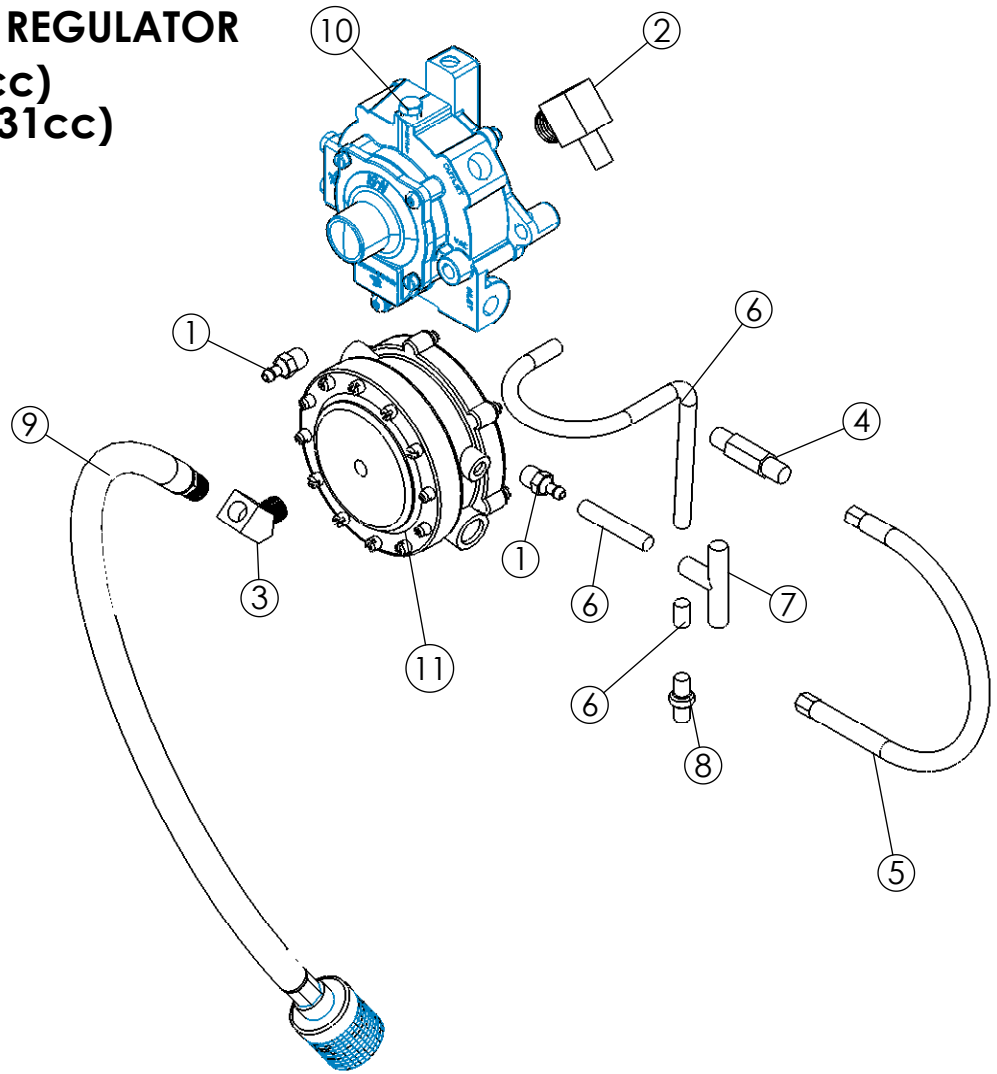
ITEM NO.	PART NUMBER	DESCRIPTION	QTY.
1	9038	CLUTCH SWITCH ASSY COMPLETE	1
2	680965	SOLUTION LID	1
3	681015	SEAL, SOLUTION TANK LID	1
4	680458	8 GALLON SOLUTION TANK WITH LID	1
5	680687	TANK BRACKET	1
6	680685	1/2-1/4 REDUCER	1
7	681265	TRACKER TANK SUPPORT BRACKET	2
8	680748	1/4 X 1/4 MANUAL SHUT OFF VALVE	1
9	680689	QUICK COUPLER	1
10	680684	NON VALVED NIPPLE	1
11	680939	5/16 - 1/4 CONNECTOR	2
12	680688	32" STAINLESS STEEL HOSE ASSY	1
13	700164	SOLUTION SOLENIOD	1
14	681258	TEE 1/2 INCH	1
15	700438	HOSE, 1/2 ID X 1/8 WALL CVT (DO NOT SELL)	2
16	681153	ELBOW 90 DEGREE 1/2 INCH BARB	2
17	680699	SOLUTION, TANK STRAP	2

KAWASAKI CARBURATOR
KAWASAKI 13 HP (431 cc)
KAWASAKI 17 HP (494cc)



ITEM NO.	PART NUMBER	DESCRIPTION	QTY.
1	W110617004	GASKET AIR FILTER	2
2	W160737007	INSULATOR	1
3	W110617018	GASKET AIR FILTER	2
4	W999966051	CARBURETOR ASSEMBLY	1
5	1143	BRASS ELBOW 3/8 X 3/8 NPT	1
6	1126	VACUUM TUBE	1
7	680235	RUBBER CAP 1/4-KAWASAKI	1
8	1117	HOSE 3' VAC	3
9	1118	HOSE 3' FUEL	3
10	680480	680968 W/32 ORIFICE KAWASAKI	1
11	680589	FUEL LOAD BLOCK 13 HP KAWASAKI	1
11	680236	FUEL LOAD BLOCK 17 HP KAWASAKI	1

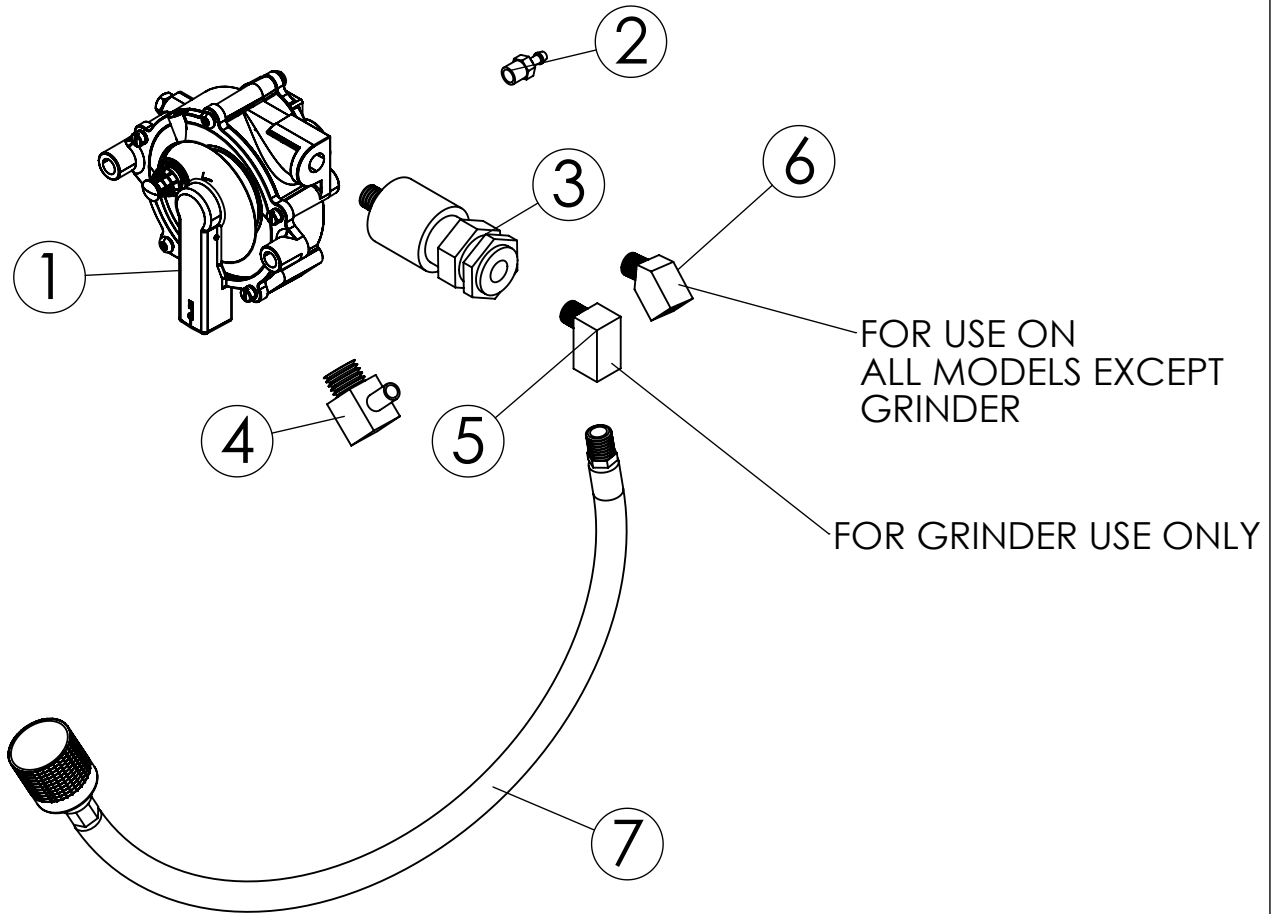
HONDA KAWASAKI REGULATOR
HONDA 13 HP (389cc)
KAWASAKI 13 HP (431cc)



ITEM NO.	PART NUMBER	DESCRIPTION	QTY.
1	1144	G11SB 3/16 X 1/8 ST. HOSE NIPPLE	2
2	1143	BRASS ELBOW 3/8 X 3/8 NPT	1
3	1142	2214P 4-4-1/4 IPS 45 ST ELBOW	1
4	1134	48EC 3/8 X 1/4	1
5	1122	HOSE LP TO REGULATOR TO LOCKOFF	1
6	1117	HOSE, VAC	1
7	9032	VACUUM TEE	1
8	H2177228	VALVE, DASHPOT CHECK	1
9	680376	FUEL HOSE WITH COUPLING	1
10	680059	KAWASAKI 13 REGULATOR T50-B	1
10	680065	HONDA REGULATOR T60-B	1
11	680061	LOCKOFF VFF-30-2-4 (KAWASAKI)	1
11	680373	HONDA LOCKOFF	1

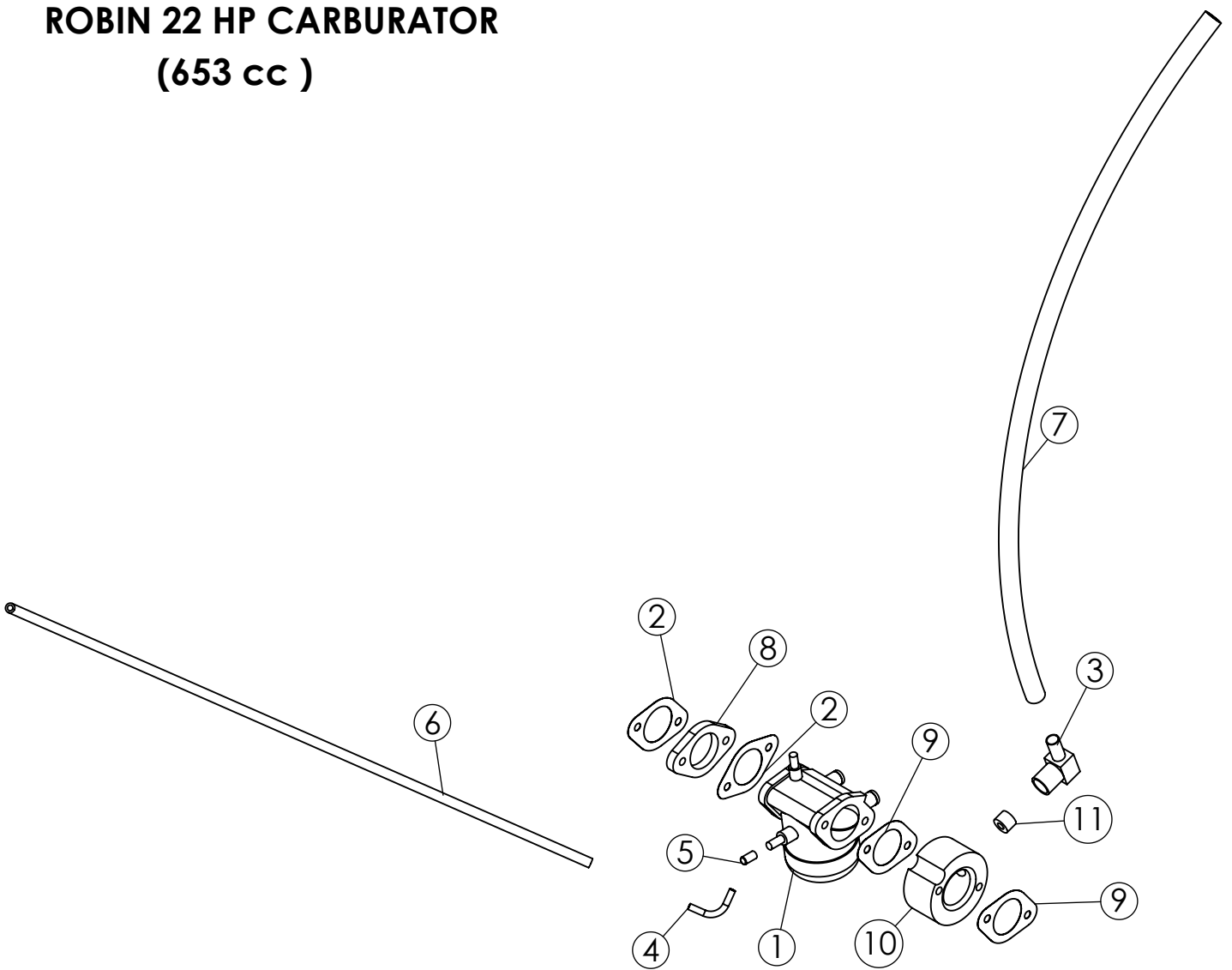
KAWASAKI ROBIN REGULATOR

**ROBIN 22 HP (653 CC)
KAWASAKI 17 HP (494cc)**



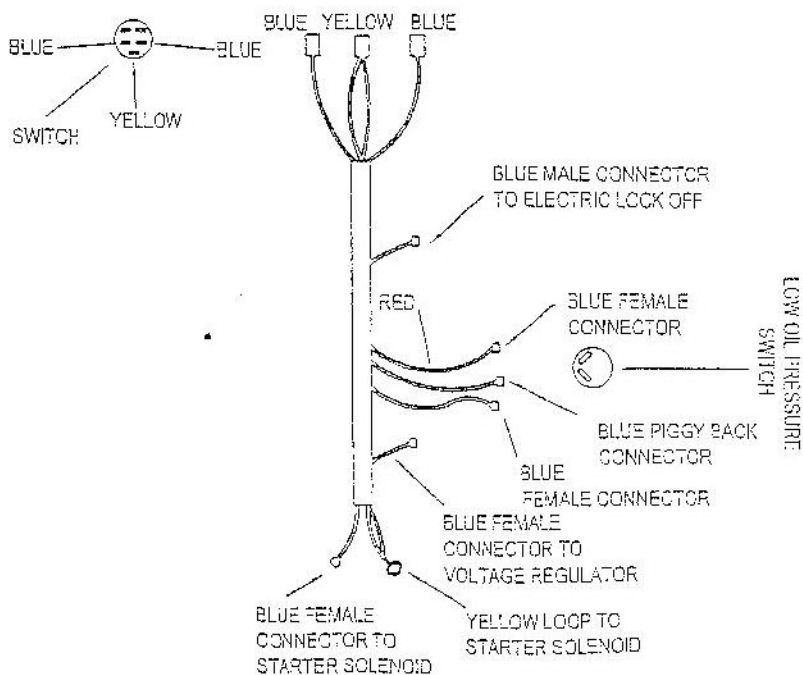
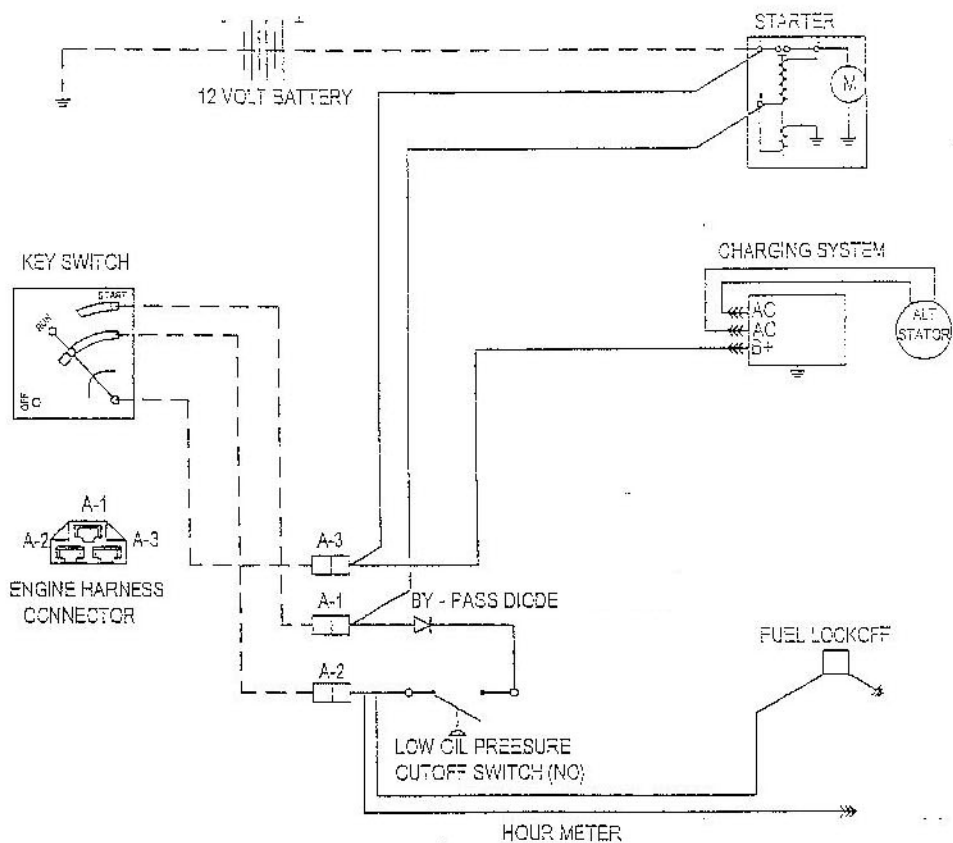
ITEM NO.	PART NUMBER	DESCRIPTION	QTY.
1	680350	REGULATOR FOR KAWASAKI & ROBIN	1
2	1144	G11SB 3/16 X 1/8 ST. HOSE NIPPLE	1
3	680265	FUEL LOCK WITH FILTER	1
4	1143	BRASS ELBOW 3/8 X 3/8 NPT	1
5	681079	1/4" 90 DEGREE STREET ELBOW	1
6	1142	2214P 4-4-1/4 IPS 45 ST ELBOW	1
7	680376	FUEL HOSE WITH COUPLING	1

ROBIN 22 HP CARBURATOR (653 cc)



ITEM NO.	PART NUMBER	DESCRIPTION	QTY.
1	R2636237110	CARBURETOR ASSEMBLY	1
2	R26335501A	GASKET AIR FILTER	2
3	1143	BRASS ELBOW 3/8 X 3/8 NPT	1
4	1126	VACUUM TUBE	1
5	680235	RUBBER CAP 1/4-KAWASAKI	1
6	1117	HOSE 3' VAC	1
7	1118	HOSE 3' FUEL	1
8	R26335401A3	INSULATOR	1
9	R26335502A3	GASKET AIR FILTER	2
10	680553	FUEL LOAD BLOCK ROBIN	1
11	680481	680968 W/27 ORFICE R	1

Kawasaki Wiring Diagram



NOTE: RED WIRE CONNECTS TO LEFT SIDE OF SWITCH
ALL OTHER WIRES CONNECT TO RIGHT SIDE OF SWITCH

Eagle/Robin Wiring Diagram

